

LEASING OPPORTUNITIES



Meet you at



4.4 Million
MAT

95+
Businesses

1,500 car spaces
(700 undercover)

33,183m² of GLA
on one level

City of
Gold Coast
public library

Largest Shopping
Centre in Primary
Trade Area

12 Schools
in MTA



CENTRE OVERVIEW

The attraction of the The Pines Elanora in comparison to alternative retail spaces is predominantly because of its unique and quality retail mix, appealing location and everyday convenience.

Located in the heart of Elanora, exciting leasing opportunities currently exist. This is your chance to be part of a dynamic retail offer in a well performing single level Shopping Centre.

The National road network (M1) and large State Government investments are now nearing completion with the Public Transport infrastructure interchange already completed, transforming access to The Pines Elanora. The Centre is centrally located 1.5km from southern Gold Coast prestige beaches and approximately 15km drive from Robina Town Centre, Pacific Fair.

The Pines Elanora is one of Queensland's top ten performing Sub-Regional Shopping Centres with over 4.4 million visitors annually¹. The Centre is currently the largest within the Primary Trade Area (PTA).

The retail mix is anchored by Aldi, Coles, Kmart & Woolworths, a dedicated fresh food precinct supported by over 95 Specialty Retailers.

The Centre boasts a solid and loyal customer base supporting Southern Gold Coast with a population of around 166,000. The trade area expenditure for 2022/23 reached \$2.6B.²

This independently owned Centre led a significant energy initiative in 2016 when they became one of the first retail Centres in Australia to install a solar powered carpark.



LOCATION

- 1 Bus Interchange (onsite)
- 2 City of Gold Coast Public Library (onsite)
- 3 Solar Rooftop Carpark (onsite)
- 4 Currumbin & Palm Beach (1.5km)
- 5 Gold Coast Airport (8km)
- 6 Coolangatta (8km)
- 7 Robina Town Centre (15km)



DEMOGRAPHICS & KEY FACTS

TOTAL TRADE AREA³

- 176,000 residents estimated
- 1.47% 5-yr growth projection

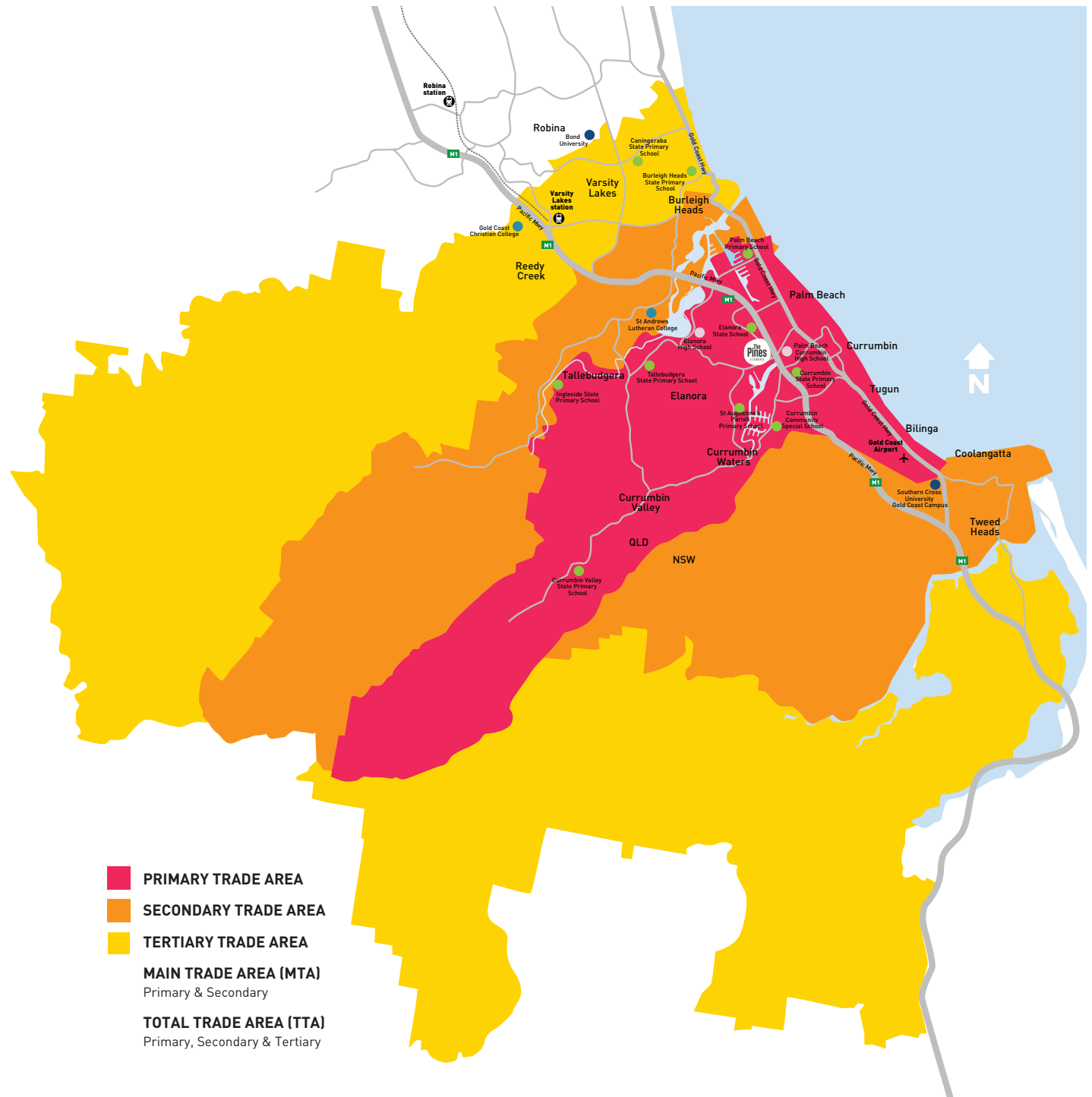
MAIN TRADE AREA³

- 92,700 residents estimated
- 60% families with children
- 17% couples with no children
- Average frequency of customer visit 5.6% per week

More than 100 Primary and approximately 34 Secondary Schools (private & public) on the Gold Coast.⁴

- 10 Primary Schools in MTA
- 2 High Schools in MTA
- 2 Private Schools in MTA 2
- Universities in MTA

- PRIMARY TRADE AREA
- SECONDARY TRADE AREA
- TERTIARY TRADE AREA
- MAIN TRADE AREA (MTA)
Primary & Secondary
- TOTAL TRADE AREA (TTA)
Primary, Secondary & Tertiary



RETAIL MIX

Major Retailers (supermarket)



Discount Department Store



Pharmacy



Key Services



Financial Institutions



Large Format Retailers



Key Food Retailers



Key National Retailers



CENTRE PERFORMANCE ⁵



MAT Sales (inc. GST)
\$278 million



Majors MAT Sales (inc. GST)
\$191 million



Specialty Category PSM
\$10,023 approx.



Average Spend
Per visit **\$63** incl. GST ⁴

CENTRE PLAN



COOLGARDIE ST



mycar
TOMRA
Kmart
coles
LIQUORLAND

ALDI
Woolworths
the fresh food people



ROOFTOP SOLAR CAR PARK



SOUTH MULTI DECK

GUINEAS CREEK ROAD

CITY GOLD COAST LIBRARY
L1
L2
L3

ENTRY

61 7
6 62 63 5
4 3 13 13A 14 15 16 17 18 19 20 21 22 23 24
13B 12 25 26 27 28 29 30 31 32 33 33A 41 42 44 45 210 211 212 213 214 215 230 232 233 234 235 236
11 10 9 8 36 60 59 38 29B 29A 70 72 73 74 76 77
66 2 67 1 68 69 69A
K1 K2 K3 K3A K4 K9 K11 BWS
K12 K14 DINING AREA K13
LOADING DOCK
LOADING DOCK
RAMP UP TO
ENTRY
ENTRY
ENTRY
ENTRY
ENTRY
ENTRY



K.P. McGRATH DRIVE

KFC

McDonald's



NORTH MULTI DECK

ARAUCARIA WAY



LEASING ENQUIRIES

Stuart Breen –
Leasing Manager
P 07 5534 6722
M 0438 000 454
E stuartb@thepineselanora.com.au

The Pines Elanora
Cnr Guineas Creek Road
and KP McGrath Drive
Elanora QLD 4221

thepineselanora.com.au  

DISCLAIMER

This document has been prepared by The Pines Shopping Centre (Qld) Pty Ltd solely for the purpose of providing information to potential tenants. It is provided on a confidential basis and is not to be distributed or reproduced in whole or in part without the prior written consent of The Pines Shopping Centre (Qld) Pty Ltd.

This document does not purport to contain all of the information that a potential tenant or any other interested party may require. It does not take into account the circumstances, financial situation, investment objectives or requirements of a potential tenant or any other person. It is intended to be used as a guide only and does not constitute advice, including without limitation, investment or any other type of advice. The information contained in this document does not constitute any offer by The Pines Shopping Centre (Qld) Pty Ltd.

Any potential tenant or any other interested party should obtain independent financial, taxation, accounting, legal and other advice to assist them in making their own decisions and assessment appropriate to their circumstances.

The Pines Shopping Centre (Qld) Pty Ltd assumes that any person who reads or uses this document is capable of evaluating the merits and risks of any investment or other decision with respect to a leasing transaction, its suitability and its financial, taxation, accounting and legal implications without any reliance on this document.

This document contains information prepared by third parties. Figures, calculations and other information contained in this document provided by third parties has not been independently verified by The Pines Shopping Centre (Qld) Pty Ltd. Any projections or forecasts represent estimates only and may be based on assumptions, which, while reasonable, may not be correct. Past performance is not a reliable indication of future performance. Any implied representation as to future performance based on historical performance is expressly disclaimed.

Users should not rely on any information contained in this document as a statement or representation of fact and must make their own enquiries to verify and satisfy themselves of all aspects of such information, including without limitation, any income, rentals, dimensions, areas, zoning and permits. While the information in this document has been prepared in good faith and with due care, no representations or warranties are made (express or implied) as to the accuracy, currency, completeness, suitability or otherwise of such information. The Pines Shopping Centre (Qld) Pty Ltd its officers, employees, subcontractors and agents shall not be liable (except to the extent that liability under statute or by operation of law cannot be excluded) to any person for any loss, liability, damage or expense arising directly or indirectly from or connected in any way with any use of or reliance on such information.

Information in this document has been included in good faith and every effort has been made to ensure that all facts and figures are correct as at 29/07/2024.

- 1 - SCN Little Guns 2023 Report
- 2 - City of Gold Coast Value add by industry 2022/23
- 3 - June 2024 Pathzz Report, 29/07/2024
- 4 - Teach Qld, dated May 2024
- 5 - All sales are inclusive of GST as at June 2024

